

## COMFORT AND SECURITY Just a few things to keep in mind



Comfortable hiking shoes



Bottle of water and food



Calculate the time of walking in order to be back before night



Suitable, waterproof clothing, cap, gloves



Sun glasses, sun protection cream, insect repellent, flashlight



Plan your excursion: The weather conditions in town are different from those in the mountains

## RECOMMENDED BEHAVIOR Be an example in taking care of our Park

Avoid annoying noises, be respectful



Forbidden to use drones

Do not enter with pets



Do not feed the animals



Walk only on marked trails



Do not make fire inside the Park



Smoke only during rests. Put out your cigarette carefully and take the filter with you



Be careful, falling trees and branches



Return with your garbage



Use the latrines (Do not throw trash in them)



Do not contaminate the water

Camp only at the allowed sites



© Tapa e interior: Myrna Ermích

## Los Glaciares National Park

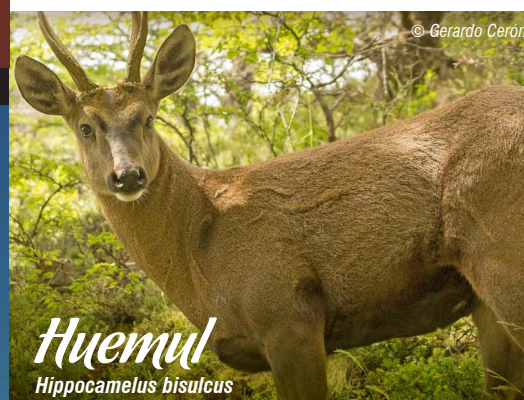


APN

North Zone

Administración de Parques Nacionales

## NATIVE FAUNA OF SPECIAL VALUE



© Gerardo Cerón

**Huemul**  
*Hippocamelus bisulcus*

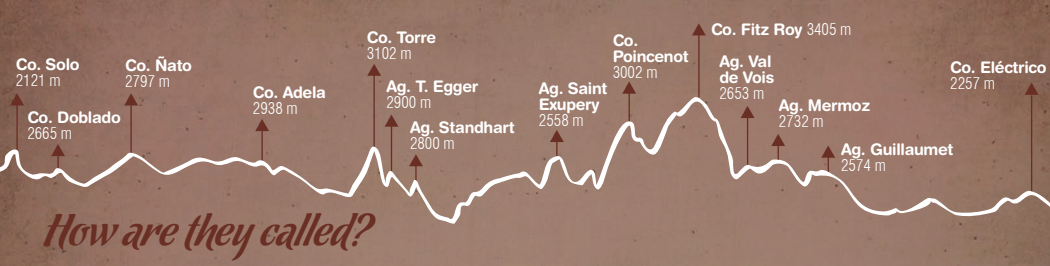
Declared Natural Monument, it is a deer in *danger of extinction* that lives only in the forests of southern Argentina and Chile. **If you meet him:** keep distance, avoid abrupt movements, do not try to touch him, enjoy the encounter in silence and notify the ranger.



**Puma**  
*Puma concolor*

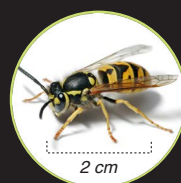
© Gpque, Mariana Martínez

It is the largest predator in Patagonia. Its conservation is very important because it is the last link in the food chain. **If you meet him:** do not run or turn your back to him. If it looks aggressive, raise your arms and yell.



How are they called?

## DANGEROUS INVASIVE SPECIES



**European wasp**  
*(Vespula germanica)*

It can «sting» more than once as it does not lose its sting; It also «itches» when it bites with its strong jaws. It is an opportunistic predator and scavenger, in the autumn her aggressive behavior increases.

- If it appears in front of you, do not make sudden movements or scare it.
- Keep food covered.
- There may be nests on the ground, avoid walking barefoot.

**In case you get stung, place cold compresses. Allergic people should go to the doctor immediately.**



**American mink**  
*(Neovison vison)*

Small-sized, predatory mammal, similar to the native ferret. It is one of the greatest threats to our fish and birds, particularly Pato de los Torrentes, a species of high conservation value.

- Do not try to grab it or catch it, it is an aggressive animal.
- Write down your location, if you can, take a picture of it and then report to the nearest National Park office.



### LOS GLACIARES NATIONAL PARK - NORTH ZONE

Ceferino Fonzo Visitor Center  
Phone: (02962) 493004 - Email: [informeszonanorte@apn.gob.ar](mailto:informeszonanorte@apn.gob.ar)  
Postal Code: 9301 | El Chaltén, Santa Cruz, Argentina

### EMERGENCIES:

Tel. I.C.E: (02966) 15383599  
VHF: RX:150.395 TX:155.135 -- RX:150.775 TX:155.215 (Subtono: 141.3)

Información actualizada: Diciembre 2017



### El Chaltén

To Fitz Roy - Laguna Capri - Chorrillo del Salto (pedestrian)

To Chorrillo del Salto - Lago del Desierto

- Health post
- Picnic area
- Bus station
- Information
- Police border

To Laguna Torre

To Los Córdones - Las Águilas Viewpoint - Loma del Pliegue Tumbado

Laguna Toro

Parques Nacionales Visitor Center

Confluencia

Río de las Vueltas

Río Fitz Roy

Av. San Martín

Av. Desierto

Av. Gables

Av. Antonio Roldán

To Los Córdones - Las Águilas Viewpoint - Loma del Pliegue Tumbado

Laguna Toro

Parques Nacionales Visitor Center

Confluencia



# PARQUE NACIONAL LOS GLACIARES ZONA NORTE

- ### References
- International border
  - National Park border
  - National Park
  - National Reserve
  - Paved road
  - Gravel road
  - Mountain
  - Glacier
  - Camping without services
  - Campground (amenities)
  - Attention (Consult Park Ranger)
  - Sailing trip
  - Viewpoint
  - Picnic area
  - Hotel / Inn
  - Park ranger
  - Interpretation center
  - Waterfall
  - Port
  - Mandatory registration
  - Meeting point



**Do not make fire inside the Park**



**Mandatory registration for climbing and trekking in remote areas**



**The water is pure. Do not wash or use soaps in water courses**

### MEETING POINT

To avoid misunderstandings with your partner or group, use this place as a meeting point at a previously set time.

	Trails	Duration one way (hs)	Level (m)	Distance (km)		Advices
Fitz Roy	From Visitor Center to beginning trail	0:20	—	2		
	Río de las Vueltas Viewpoint	0:20	100	0,7		Beautiful view of Río de las Vueltas valley.
	Fitz Roy Viewpoint	1:30	350	4		Great trail if you visit the area just for a day. Excellent views of Fitz Roy range.
	Laguna Capri	1:45	350	4	•	
	Poincenot	2:45	350	8	•	Camping inside the forest.
	Laguna de los Tres	4	750	10	•	Very steep trail. Dangerous when it's windy and rainy. Nearest view of Fitz Roy range.
Torre	Piedras Blancas Viewpoint	3:30	350	10		Beautiful view of the glacier and lagoon.
	Madre e Hija	2:30	100	8		The meeting of the two main trails.
	From Visitor Center to beginning trail	0:20	—	2		
	Torre Viewpoint	1:15	250	3		Great trail if you visit the area just for a day.
	De Agostini	2:45	250	9	•	Camping inside the forest.
	Laguna Torre	3	250	9	•	Beautiful view of the glacier and lagoon.
Other	Maestri Viewpoint	4	300	11	•	Exposed to wind. Beautiful view of the glacier.
	Chorrillo del Salto	0:40	—	3		Waterfall. The easiest trail in the area.
	Los Córdones Viewpoint	0:45	100	1		Nice view of El Chaltén and mountains.
	Las Águilas Viewpoint	1	100	2		Lago Viedma and steppe viewpoint.
	Loma del Pliegue Tumbado	4	1000	10		Marvellous panoramic view with clear sky.
Laguna Toro	7	500	16	•	Must register. Unmarked trail.	

Glaciar Viedma

Lago Viedma